

Installing CosmosScope

Version D-2010.03, March 2010

SYNOPSYS®

Copyright Notice and Proprietary Information

Copyright © 2010 Synopsys, Inc. All rights reserved. This software and documentation contain confidential and proprietary information that is the property of Synopsys, Inc. The software and documentation are furnished under a license agreement and may be used or copied only in accordance with the terms of the license agreement. No part of the software and documentation may be reproduced, transmitted, or translated, in any form or by any means, electronic, mechanical, manual, optical, or otherwise, without prior written permission of Synopsys, Inc., or as expressly provided by the license agreement.

Right to Copy Documentation

The license agreement with Synopsys permits licensee to make copies of the documentation for its internal use only. Each copy shall include all copyrights, trademarks, service marks, and proprietary rights notices, if any. Licensee must assign sequential numbers to all copies. These copies shall contain the following legend on the cover page:

“This document is duplicated with the permission of Synopsys, Inc., for the exclusive use of _____ and its employees. This is copy number _____.”

Destination Control Statement

All technical data contained in this publication is subject to the export control laws of the United States of America. Disclosure to nationals of other countries contrary to United States law is prohibited. It is the reader's responsibility to determine the applicable regulations and to comply with them.

Disclaimer

SYNOPSIS, INC., AND ITS LICENSORS MAKE NO WARRANTY OF ANY KIND, EXPRESS OR IMPLIED, WITH REGARD TO THIS MATERIAL, INCLUDING, BUT NOT LIMITED TO, THE IMPLIED WARRANTIES OF MERCHANTABILITY AND FITNESS FOR A PARTICULAR PURPOSE.

Registered Trademarks (®)

Synopsys, AMPS, Astro, Behavior Extracting Synthesis Technology, Cadabra, CATS, Certify, CHIPit, Design Compiler, DesignWare, Formality, HDL Analyst, HSIM, HSPICE, Identify, Leda, MAST, ModelTools, NanoSim, OpenVera, PathMill, Physical Compiler, PrimeTime, SCOPE, Simply Better Results, SiVL, SNUG, SolvNet, Syndicated, Synplicity, the Synplicity logo, Synplify, Synplify Pro, Synthesis Constraints Optimization Environment, TetraMAX, UMRBus, VCS, Vera, and YIELDirector are registered trademarks of Synopsys, Inc.

Trademarks (™)

AFGen, Apollo, Astro-Rail, Astro-Xtalk, Aurora, AvanWaves, BEST, Columbia, Columbia-CE, Confirma, Cosmos, CosmosLE, CosmosScope, CRITIC, CustomExplorer, CustomSim, DC Expert, DC Professional, DC Ultra, Design Analyzer, Design Vision, DesignerHDL, DesignPower, DFTMAX, Direct Silicon Access, Discovery, Eclipse, Encore, EPIC, Galaxy, Galaxy Custom Designer, HANEX, HAPS, HapsTrak, HDL Compiler, Hercules, Hierarchical Optimization Technology, High-performance ASIC Prototyping System, HSIM^{Plus}, i-Virtual Stepper, IIICE, in-Sync, iN-Tandem, Jupiter, Jupiter-DP, JupiterXT, JupiterXT-ASIC, Liberty, Libra-Passport, Library Compiler, Magellan, Mars, Mars-Rail, Mars-Xtalk, Milkyway, ModelSource, Module Compiler, MultiPoint, Physical Analyst, Planet, Planet-PL, Polaris, Power Compiler, Raphael, Saturn, Scirocco, Scirocco-i, Star-RCXT, Star-SimXT, StarRC, System Compiler, System Designer, Taurus, TotalRecall, TSUPREM-4, VCS Express, VCSi, VHDL Compiler, VirSim, and VMC are trademarks of Synopsys, Inc.

Service Marks (sm)

MAP-in, SVP Café, and TAP-in are service marks of Synopsys, Inc.

SystemC is a trademark of the Open SystemC Initiative and is used under license.

ARM and AMBA are registered trademarks of ARM Limited.

Saber is a registered trademark of SabreMark Limited Partnership and is used under license.

All other product or company names may be trademarks of their respective owners.

Installing CosmosScope

This document contains specific information to prepare for and verify installation of CosmosScope as well as links to installation instructions.

Install the latest version of CosmosScope in a folder that does not contain an existing installation. A common license can serve multiple versions of CosmosScope.

Note: The installation instructions in this document are the most up-to-date available at the time of production. However, changes might have occurred. For the latest installation information, see CosmosScope release notes or documentation on [SolvNet](#).

This section covers the following topics:

- [Media Availability and Supported Platforms](#)
- [Disk Space and Memory Requirements](#)
- [Installing the Software](#)
- [Setting Up the User Environment](#)
- [Verifying the CosmosScope Installation](#)
- [Accessing CosmosScope Documentation](#)

Media Availability and Supported Platforms

Important: Retrieve your license keys from the SmartKeys Web page. To access the SmartKeys webpage, click the SmartKeys link from the [Download Center](#).

For detailed licensing information, see the [Synopsys Licensing QuickStart Guide](#).

The CosmosScope tool is available by electronic software transfer (EST) download or as tangible media (DVD or CD, depending on the image size). Obtain the appropriate binary executable files based on the operating system (OS) you need.

[Table 1](#) lists the supported compute platforms, operating systems, corresponding Synopsys platform keywords, and window environments for this release. Many platforms require operating system patches.

For detailed information, see the Supported Platforms Guide page on the Synopsys Web site. Go to <http://www.synopsys.com/qsc>.

Under Supported Platforms Guides, select the appropriate foundation for your release. This Web page provides information about supported hardware, operating systems, and required OS patches. If the required patch described on this page is not available from the platform vendor, install the most recent patch instead.

Table 1 Supported Platforms, Operating Systems, and Keywords

Platform	Operating system	Synopsys platform keyword	Window environment
x86_64	Microsoft Windows XP Professional		Open GL
x86	Red Hat Enterprise Linux v4, 5	linux (32-bit mode) ¹	GNOME
x86	SUSE Enterprise Linux v9, 10 ² Note: Supported only on IA- 32 and AMD Opteron	suse32 (32-bit mode)	KDE
Sun SPARC	Solaris 9, 10 ¹	sparcOS5 (32-bit mode)	CDE
x86	Microsoft Windows Vista 32-bit Microsoft Windows XP Professional 32-bit Microsoft Windows 7 32-bit		Open GL

1. Binary-compatible hardware platform or operating system. Note, however, that binary compatibility is not guaranteed. See <http://www.synopsys.com/qsc> for the latest information on supported platforms.

2. The 32-bit (x86) and 64-bit (x86_64) Linux software is binary compatible with the Intel EM64T or AMD Opteron running Red Hat Enterprise Linux. See <http://www.synopsys.com/qsc> for the latest information on supported platforms.

Note: The CosmosScope software is configured so that multiple platforms of this version can be installed in a single installation directory (*install_dir*).

Disk Space and Memory Requirements

Ensure that you have a minimum of 700 MB of free space for a full installation of Saber on a single platform. The disk space requirement varies depending on the platform and the tool selected for installation. [Table 2](#) shows the minimum space required for installing each product on a particular platform.

Table 2 Disk Space and Memory Requirements (in Megabytes)

Platform	Software (maximum)	Default temporary directory location	Minimum disk space to run the installer	Temporary disk space during installation
Sun Solaris	1470	/var/tmp	520	700
Linux	1500	/tmp	480	650
Windows	1310	%TEMP% or %HOME%\Local Settings\Temp	700	600

Note: If there is not enough disk space in the default temporary directory, set the environment variable in one of the following ways and launch the CosmosScope Installer program:

```
setenv IATEMPDIR /home/my_user_name/tmp or  
export IATEMPDIR=/home/my_user_name/tmp or  
change the Windows system environmental variable %TEMP%.
```

Installing the Software

Ensure to close any open CosmosScope applications before proceeding with the installation.

To install CosmosScope by EST or from the DVD or CD, follow these procedures

Chapter :
Installing the Software

- [Installing for the First Time](#)
- [Cancelling Installation](#)
- [Installing from Command Line Using Silent Mode](#)
- [Uninstalling the Software](#)

Installing for the First Time

Perform the following steps to install the CosmosScope software:

1. You can install the CosmosScope software in one of the two ways:

If you are installing from...	then...
EST	Download the CosmosScope release to a temporary directory. You can obtain the latest CosmosScope download instructions from the Release Library, which is accessible through SolvNet. Double click the installer. The CosmosScope installer automatically pre-installs the required software. If the pre-install software already exists, the installer continues with installing CosmosScope. Proceed with Step 3 of this procedure.
a CD	Proceed with Step 2 of this procedure

Note: On Windows platform, CosmosScope requires Microsoft Visual C++ 2008 Redistributable - x86 9.0.30729 software.

2. Place the CD in the CD drive. The following events takes place depending on the platform on which you want to install the software:

Solaris or Linux	Windows
Most Solaris and Linux systems will automatically mount the CD. If the CD does not mount, see Installing Synopsys Tools . Execute the following commands to invoke the CosmosScope installer: <code>%/cdrom/cosmosscope_version_platform</code> Or <code>% cd your_cd_path; ./cosmosscope_version_platform</code>	The installation program should start automatically. If it does not, double-click the setup.exe executable file, located at the root level of the CD. The CosmosScope installer automatically pre-installs the required software. If the pre-install software already exists, the installer continues with installing CosmosScope.

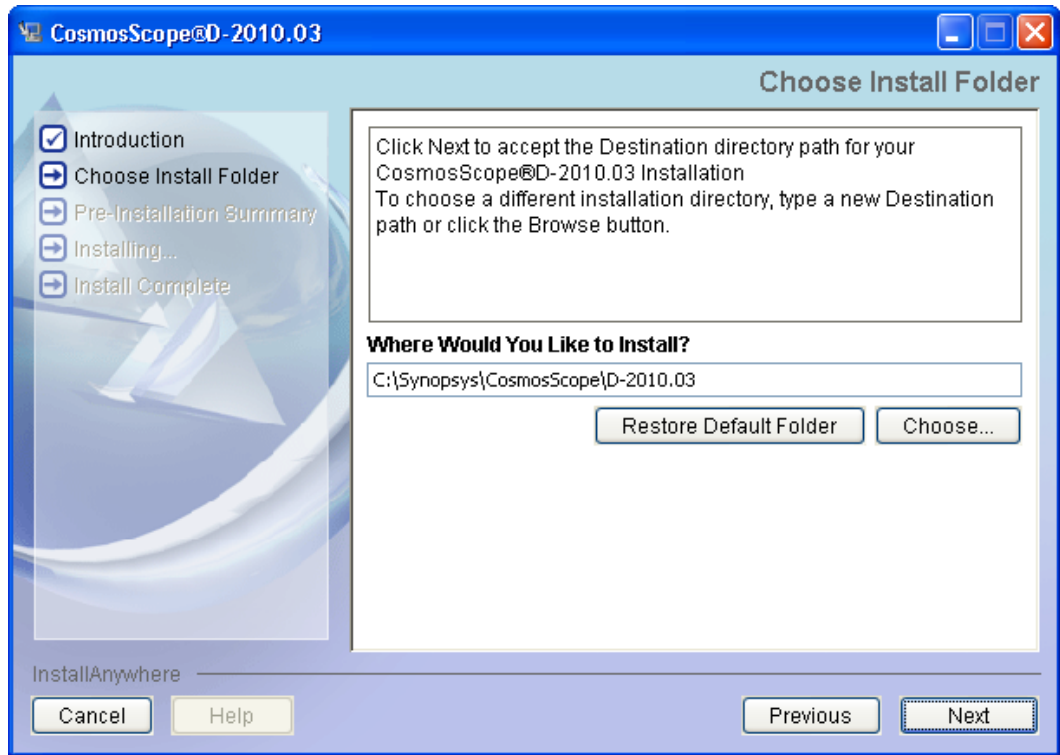
Note: Mounting the CD might require system administrator privileges.

3. The CosmosScope Installer window is launched and the *Introduction*:



Chapter :
Installing the Software

4. Click **Next** to choose the installation folder. The **Choose Install Folder** window is displayed:



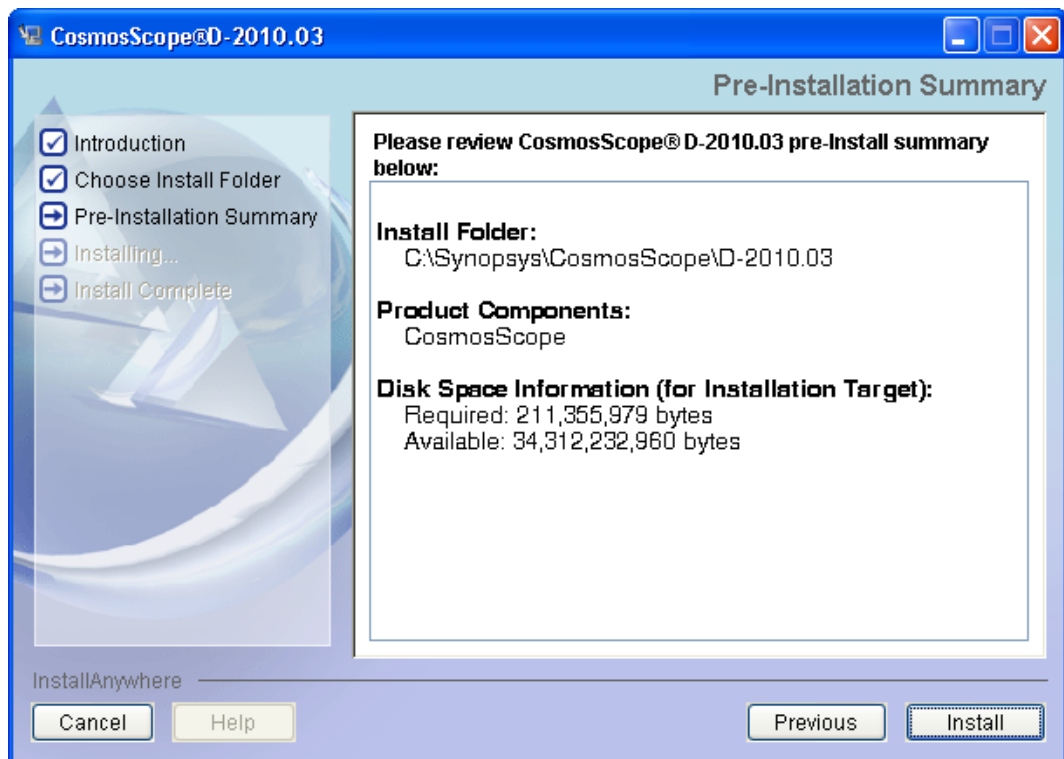
The default installation location is automatically resolved and displayed. You can choose to change the installation path by clicking the **Choose** button .

Note: Ensure that you have write permissions to the specified installation location.

The table below describes the default installation locations on different platforms:

Platform	Default install location
Windows	C:\Synopsys\CosmosScope\<>version<
Solaris	/opt/Synopsys/CosmosScope/<version>
Linux	/opt/Synopsys/CosmosScope/<version>

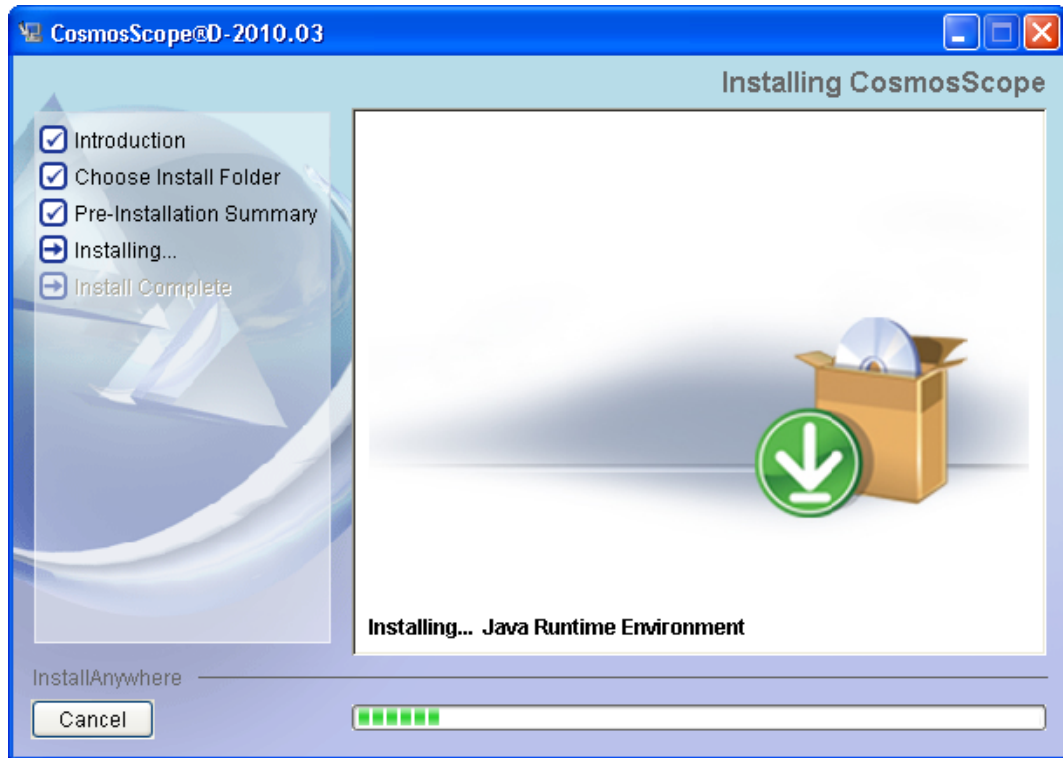
5. Click **Next** to view the pre-installation summary. The **Pre-Install Summary** screen is displayed:



This window summarizes the information collected and evaluated prior to the installation.

Chapter :
Installing the Software

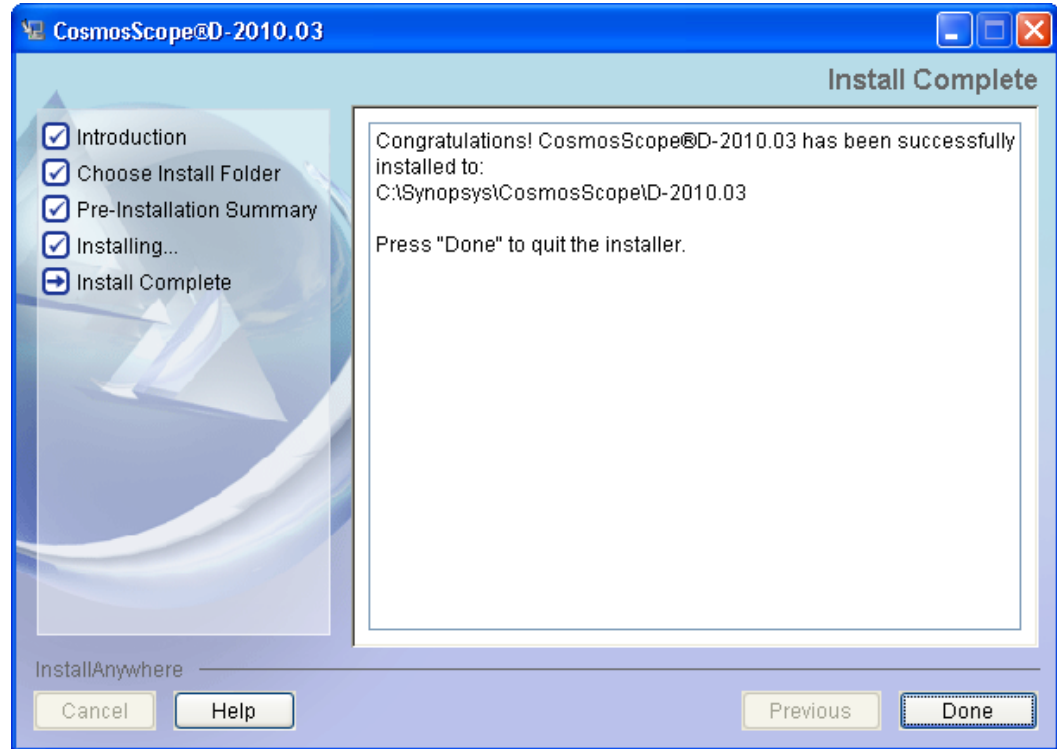
6. Click **Install** to initiate the installation process. The **Installing CosmosScope** window appears:



Following events occur during the installation process:

- Creates an install log file that records the install results. The log file is used to trace any installation errors
- Installs Java Runtime Environment (JRE) to prepare the install environment
- Installs features according to user choice
- Imports registry information into windows registry (Windows only)

- When the installation is complete, the **View Release Notes** dialog box is displayed. Click **Yes** to view the release notes else click **No** to close the dialog box.



- Click **Done** to exit the CosmosScope Installer program.

Note: If the installation fails, please refer to the install log file in the root of the installation location to fix the problem.

Cancelling Installation

The following actions are taken when you cancel an in-progress installation:

Case	When you click the Cancel button...	then the installation is cancelled...
1	before the pre-request installation starts	and any files and folders upto the point of cancellation are placed in the temporary directory. The uninstall program removes all files and folders created during the cancelled installation.

Case	When you click the Cancel button...	then the installation is cancelled...
2	during the pre-request installation	and any files and folders upto the point of cancellation are placed in the install directory. Navigate to the <installation_path>/_Pre_Install/ directory and click the uninstall.exe. The uninstall program removes all files and folders created during the cancelled installation.
3	before CosmosScope installation starts	Same as Case 1.
4	during CosmosScope installation	and any files and folders upto the point of cancellation are placed in the install directory. Navigate to the <installation_path>/CosmosScope/ directory and click the uninstall.exe. The uninstall program removes all files and folders created during the cancelled installation.

Installing from Command Line Using Silent Mode

You can install CosmosScope on Solaris and Linux platforms by using the `setup` script command and on Windows platforms by invoking the `setup.exe` installation program.

By default, the CosmosScope installer invokes the GUI installation program on all platforms. You can choose to install the software in a non-interactive (silent) mode.

Silent mode installation suppresses all interactive and graphic output. You can choose to install CosmosScope using one of the following options:

- [Using Default Settings](#)
- [Using a Single Command](#)
- [Using an install.properties File](#)

Using Default Settings

Execute the following command to install CosmosScope using the default settings:

Platform	Command
Unix / Linux	<code>CosmosScope <version>_linux.bin -i silent</code>
Windows	<code>CosmosScope <version>_win.exe -i silent</code> CosmosScope is installed in the default directory, <code>C:\Synopsys\CosmosScope\<version></code>

Using a Single Command

Execute the following command on a single line to install CosmosScope using custom settings.

Platform	Command
Unix / Linux	<code>CosmosScope_<version>_linux.bin -i SILENT - DUSER_INSTALL_DIR=<installation_path></code> Where <code>-DUSER_INSTALL_DIR</code> specifies the installation path. Use the forward slash (/) as the delimiter while specifying the installation path and the component source folder path. For example: <code>/remote/us03ops/clients/CosmosScope</code>
Windows	<code>CosmosScope_<version>_win.exe -i SILENT - DUSER_INSTALL_DIR=<installation_path></code> Where <code>-DUSER_INSTALL_DIR</code> specifies the installation path. Use the double backward slash (\\) as the delimiter while specifying the installation path and the component source folder path. For example: <code>C:\\Synopsys\\CosmosScope</code>

Using an install.properties File

Define a custom `.properties` file as an input to the command as follows:

Platform	Command
Unix/Linux	<pre>CosmosScope_<version>_linux.bin -i silent -f <path_to_properties_file></pre> <p>Properties file format:</p> <pre>INSTALLER_UI=silent USER_INSTALL_DIR=<installation_path></pre> <p>Where:</p> <ul style="list-style-type: none">■ <code>INSTALLER_UI=silent</code> - Specifies the mode for the installer.■ <code>USER_INSTALL_DIR</code> - Specifies the installation path. <p>Note:</p> <p>Use the forward slash (/) as the delimiter while specifying the installation path and the component source folder path.</p> <p>For example: <code>/remote/us03ops/clients/CosmosScope</code></p>
Windows	<pre>CosmosScope_<version>_win.exe -i silent -f <path_to_properties_file></pre> <p>Properties file format:</p> <pre>INSTALLER_UI=silent USER_INSTALL_DIR=<installation_path></pre> <p>Where:</p> <ul style="list-style-type: none">■ <code>INSTALLER_UI=silent</code> - Specifies the mode for the installer.■ <code>USER_INSTALL_DIR</code> - Specifies the installation path. <p>Use the double backward slash (\\) as the delimiter while specifying the installation path and the component source folder path.</p> <p>For example: <code>C:\\Synopsys\\CosmosScope</code></p>

Uninstalling the Software

The Uninstall program removes all files and folders created through the install process.

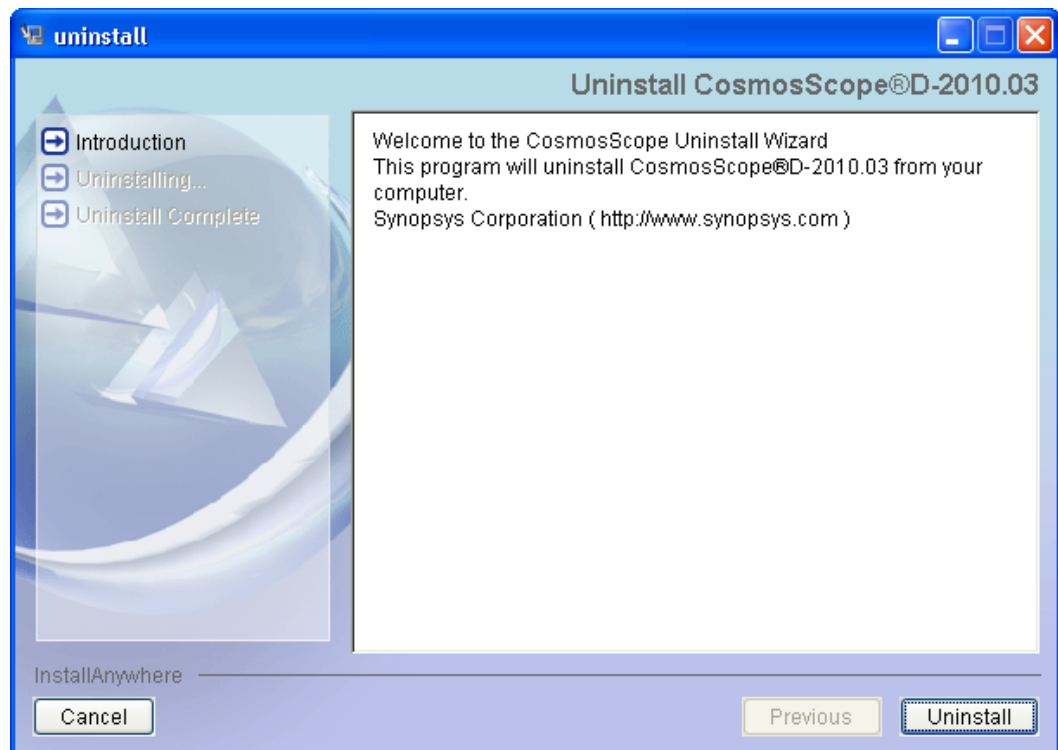
Note: Files and folders created by you in the installation directory is not considered for removal by the CosmosScope Uninstall program.

Perform the following steps to uninstall CosmosScope:

1. See the table below for information on uninstalling CosmosScope on a specific platform:

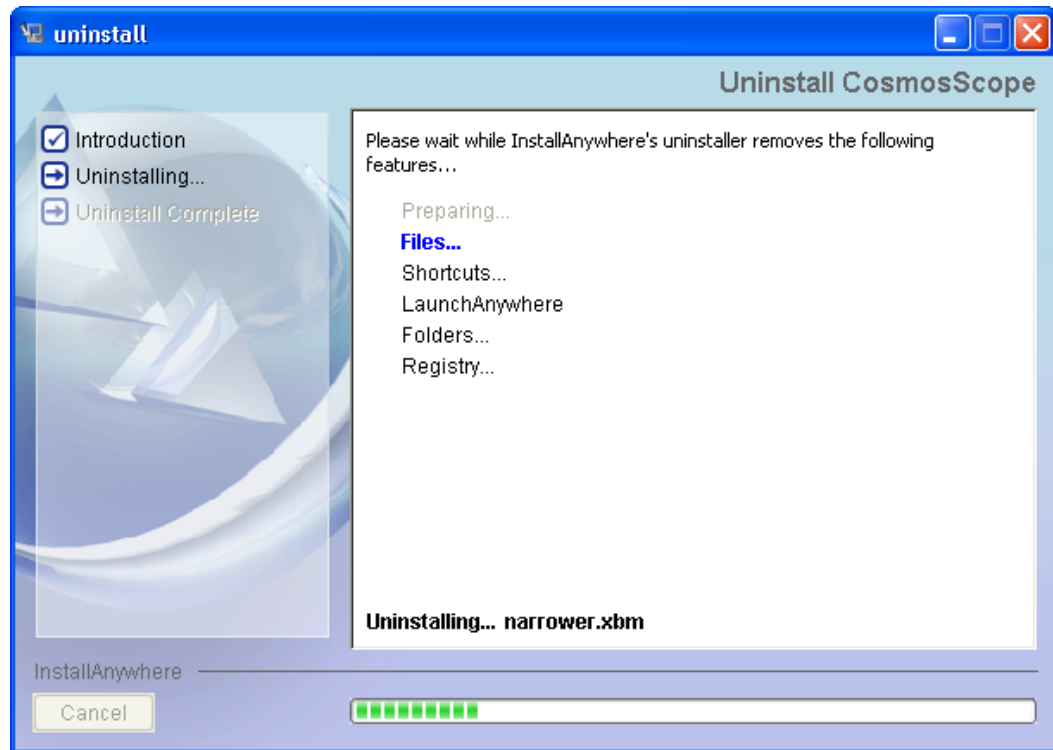
To uninstall CosmosScope on...	choose one of the following option...
Solaris / Linux platform	<ul style="list-style-type: none">▪ Execute the uninstall program, which is located in the <Install_home>/CosmosScope directory. The uninstall program is launched as show in the next step.▪ Delete the entire software directory.
Windows platform	<ul style="list-style-type: none">▪ Execute the uninstall program, which is located in the <Install_home>/_CosmosScope directory. The uninstall program is launched as show in the next step.▪ From the Control Panel, select "Add or Remove Programs", select the version of CosmosScope you want to uninstall and click the Change/Remove button. The uninstall program is launched as show in the next step.▪ Choose Start > Programs > Synopsys > CosmosScope version > uninstall. The uninstall program is launched as show in the next step.

2. The Uninstall CosmosScope window appears:

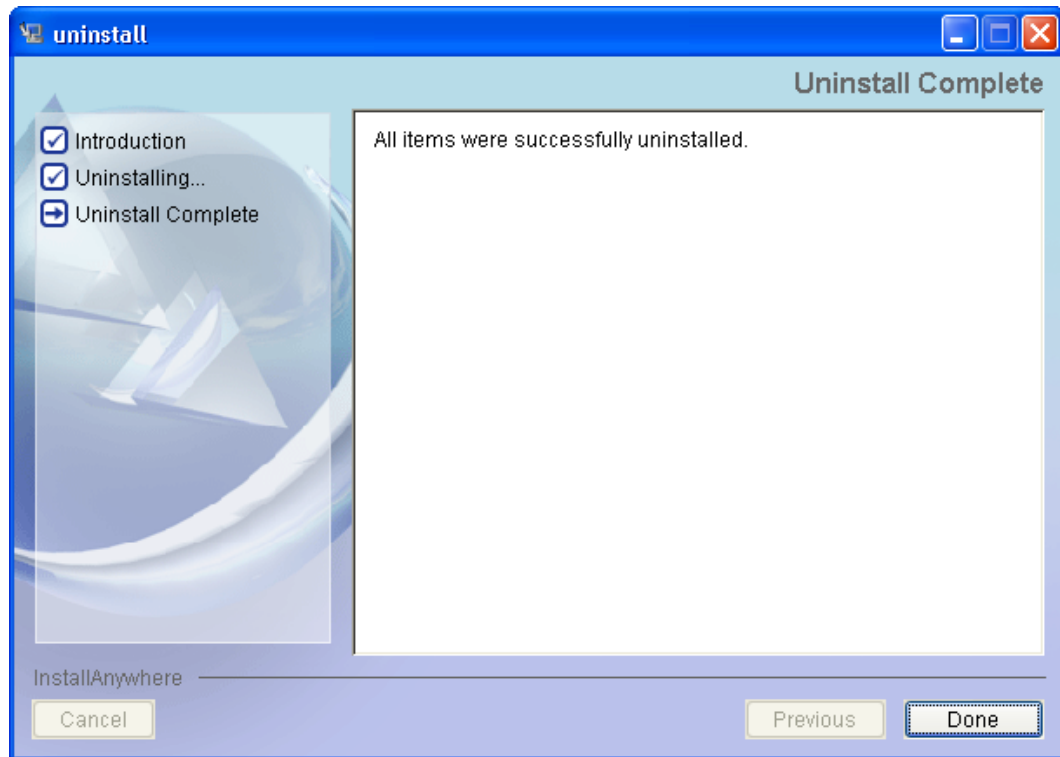


Chapter :
Installing the Software

3. Click the **Uninstall** button to start uninstalling CosmosScope. The **Uninstall CosmosScope** window appears:



4. Once the uninstall is complete, the **Uninstall Complete** screen is appears:



5. Click **Done** to exit the Uninstall CosmosScope program.

Setting Up the User Environment

A platform-independent wrapper script is provided for CosmosScope. This script automatically determines the OS platform at runtime, which simplifies the setup required to use CosmosScope.

The platform-independent wrapper script is located at *install-dir/bin* and includes *-32bit* and *-64bit* options.

Note: If you select a platform executable file that is not available, an automatic switch is made to an available platform based on your current environment. No warning message is issued.

Setting up the user environment is described in these sections:

Chapter :

Verifying the CosmosScope Installation

- [Specifying the Executable File Location](#)
- [Setting the License File Environment Variable](#)

Specifying the Executable File Location

Add the CosmosScope directory containing the executable file to the `PATH` environment variable.

- If you are using the C shell, add the following line to the `.cshrc` file:
 - `setenv path=(install_dir/ai_bin $path)`
- If you are using the Bourne, Korn, or Bash shell, add the following line to the `.profile`, `.kshrc`, or `.bashrc` file:

```
PATH=install_dir/bin:$PATH
export PATH
```

Setting the License File Environment Variable

You must install the Synopsys Common Licensing (SCL) software, retrieve your license key file, and define the `SNPSLMD_LICENSE_FILE` or `LM_LICENSE_FILE` environment variable before you can verify the CosmosScope installation.

For information about downloading and installing SCL and on setting the license variable, see the *Synopsys Licensing QuickStart Guide*, which is available from <http://www.synopsys.com/Support/Licensing/Licensing/Pages/default.aspx>.

Verifying the CosmosScope Installation

To verify the CosmosScope installation on Windows, choose **Start > Programs > Synopsys > CosmosScope version > Application**.

To verify CosmosScope installation on Solaris and Unix:

1. Make sure you are in a directory where you have read/write privileges.

```
% cd $HOME
```

2. Invoke the tool by entering

```
% product -v
```

If you see information about the product version, production date, and copyright, the installation was successful.

Accessing CosmosScope Documentation

The documentation for CosmosScope is available as PDF files or as online Help.

This section covers the following topics:

- [Viewing and Printing CosmosScope Documentation in Portable Document Format](#)
- [Viewing CosmosScope Online Help](#)

Viewing and Printing CosmosScope Documentation in Portable Document Format

To view and print CosmosScope documentation in PDF, you must have Adobe Acrobat Reader installed on your machine.

Viewing CosmosScope Online Help

The online Help system is a browser-based HTML Help system.

To view a Help system, Synopsys recommends the following minimum revisions web browsers on the Synopsys-supported platforms (later versions should also work):

Platform	Operating Systems	Supported Browsers
IBM RS6000 AIX 32- and 64-bit	AIX 5.3	Firefox 1.5 Mozilla 1.7
SunSPARC Solaris 32- & 64-bit	Solaris 9 or 10 ¹	Firefox 1.5, 2.0 Mozilla 1.7
X86 (IA-32) 32-bit & Linux 32-bit	Red Hat Enterprise Linux 4 or 5 SUSE Linux Enterprise Server 9 or 10	Firefox 1.5, 2.0, 3.0 ² Mozilla 1.7 Netscape Navigator 7.0

Platform	Operating Systems	Supported Browsers
X86_64 Linux 64-bit	Red Hat Enterprise Linux 4 or 5 SUSE Linux Enterprise Server 9 or 10	Firefox 1.5, 2.0, 3.0 ² Mozilla 1.7 Netscape Navigator 7.0
X86 Windows 2000	Windows 2000	Firefox 1.5, 2.0, 3.0 ³ Internet Explorer 6.0 Mozilla 1.7 Netscape Navigator 7.0
X86 Windows XP Professional	Windows XP Professional v2002	Firefox 1.5, 2.0, 3.0 ³ Internet Explorer 6.0 Mozilla 1.7 Netscape Navigator 7.0
X86 Windows 7	Windows 7	Firefox 1.5, 2.0, 3.0 ³ Internet Explorer 6.0 Mozilla 1.7 Netscape Navigator 7.0

1. *Synopsys does not recommend using Netscape Navigator to view Help on Solaris.*
2. *Synopsys recommends using Firefox 3.0 builds 2008052912 or later on Linux.*
3. *Synopsys recommends using Firefox 3.0 builds 2008052906 or later on Windows.*

This following sections describe:

- [Setting a Default Browser on Windows](#)
- [Setting a Default Browser on UNIX or Linux](#)
- [Setting MIME Types to View PDFs from Help](#)

Setting a Default Browser on Windows

On Windows, Help opens the browser associated with .html files (typically Internet Explorer).

To use a browser other than Internet Explorer on Windows:

1. Open the browser that you want to use.
2. Open the Add or Remove Programs applet (available from the Control Panel).
3. Choose Set Program Access and Defaults.
4. Select Custom and click the down arrow to display the custom menu.
5. Choose "Use my current Web browser" and click OK.

Result: The next time you click Help, the Help content will appear in your selected default browser.

Setting a Default Browser on UNIX or Linux

The Help system finds HTML browsers on UNIX or Linux by searching for browsers in this order: Netscape, Mozilla, Internet Explorer. It searches for these browsers in the following locations:

1. It first searches in the directories listed in your \$PATH environment variable for the following executables in the following order:

```
netscape6  
netscape  
mozilla  
iexplorer
```

2. If Help doesn't find these executables in your \$PATH, it searches first for netscape6, then netscape, then mozilla, in the following customary locations:

```
/opt/browser/  
/usr/local/bin/  
/usr/local/browser/  
/usr/bin/browser
```

3. Finally, it looks for the Internet Explorer executable in this location:

```
/usr/local/microsoft/bin/iexplorer
```

To use a browser other than those listed above on UNIX or Linux, there are two methods you can use.

Method A: Open the browser you want to use first:

1. Before you use Help, open the browser you want to use, such as Firefox.
2. Then start Help from your Synopsys application.

The Help document will open in the currently opened browser.

Method B: Link the executable you want to use to one of the executables (netscape or mozilla) used by Help by default:

- For example, assume that you want to use your Firefox browser executable instead of Mozilla, and that both executables are located in /usr/bin. Make a symbolic link from the firefox executable to mozilla as follows:

```
cd /usr/bin  
ln -s firefox mozilla
```

Chapter :
Accessing CosmosScope Documentation

This will cause Help to start Firefox in place of Mozilla when Help is called.

Note: If you make this change, all users on this system will start Firefox instead of Mozilla on this server, in any context.

Setting MIME Types to View PDFs from Help

Online Help includes PDF versions of the documents, for use in printing. In order for links from the Help to the PDF to work, you must set an association in your browser for MIME type "application/pdf" with an appropriate PDF viewer for your platform. See the documentation for your particular browser for specific instructions on creating MIME-type associations.